

# ZTC Degree Mapping

## Unraveling the Credential Maze

Amanda Grey, MLIS

Dr. Nishan Perera, PhD

Oluwatobi Ojo, BSc



# Acknowledgement of Country

Kwantlen Polytechnic University  
campuses are located on the unceded  
traditional and ancestral territory of the

q'w̓a:n̓'ən' (Kwantlen)

x̓m̓əθk̓w̓əy̓əm (Musqueam)

q̓ic̓əy̓' (Katzie)

SEMYOME (Semiahmoo)

sc̓əwaθən m̓əsteuəx̓w̓  
(Tsawwassen)

q̓iq̓eyt (Qayqayt)

k̓w̓ik̓w̓əłəm (Kwkwetlem)



# Introduction - ZTC Mapping

What is this  
presentation about?



Photo by [Ashley Batz](#) on [Unsplash](#)

# Presentation Outline

- Background – ZTC at KPU
- Tracking Credentials
- Dashboard Demo
- Creating the Dashboard



# Background

Where is ZTC at?



# Zero Textbook Costs

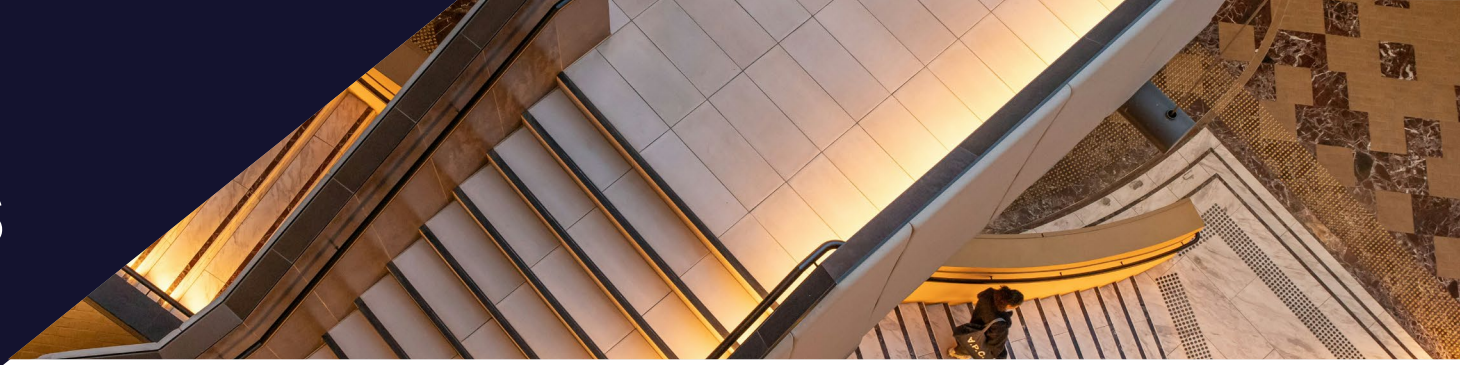


Photo by [Mitchell Luo](#) on Pexels

Courses are designated ZTC when students are not required to purchase learning resources, such as a commercial textbook, to fulfill the learning objectives of a course.

# Zero Textbook Costs

Photo by [Mitchell Luo](#) on Pexels

## **ZTC can be achieved by**

- having no required textbook
- Assigning an OER
- Assigning library resources
- Providing instructor notes
- Using free online content



# ZTC at KPU

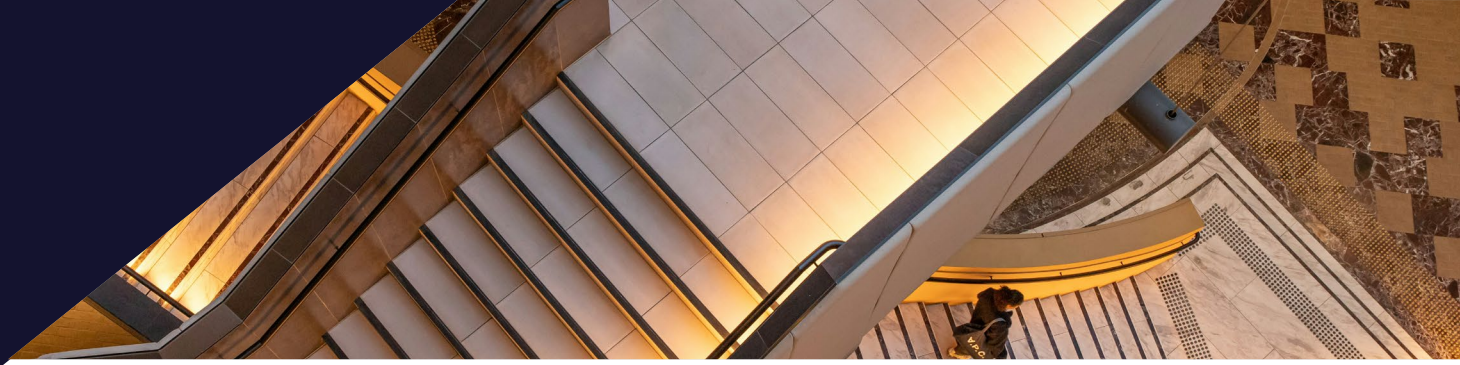


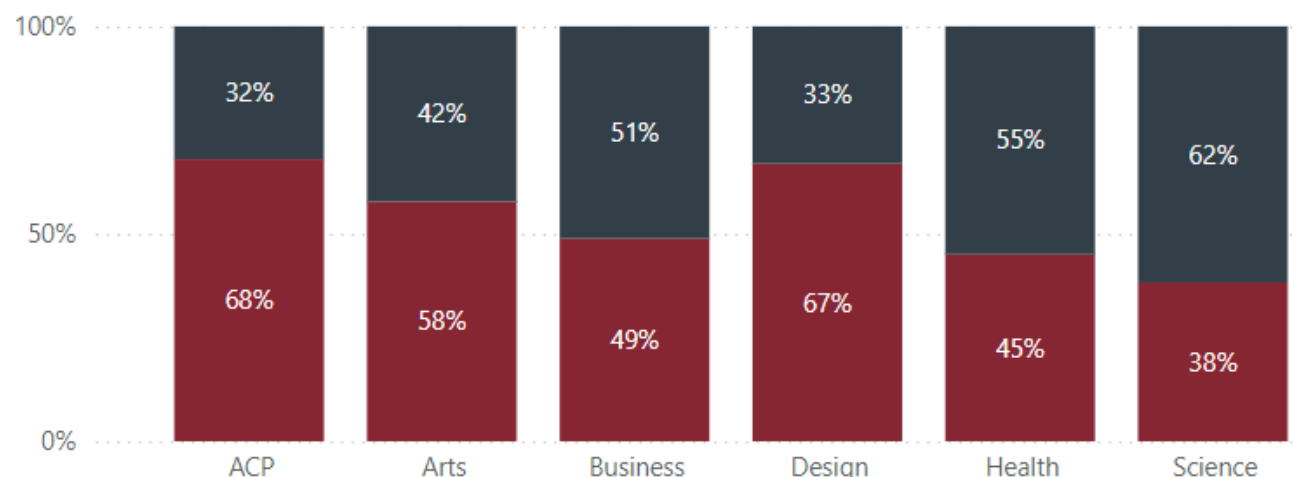
Photo by [Mitchell Luo on Pexels](#)

- Spring 2018 (BCcampus grant)
  - Certificate in Arts program
  - 75 course sections; 38 instructors
- Fall 2024
  - 8 ZTC Credentials
  - 440 course sections; 210 instructors



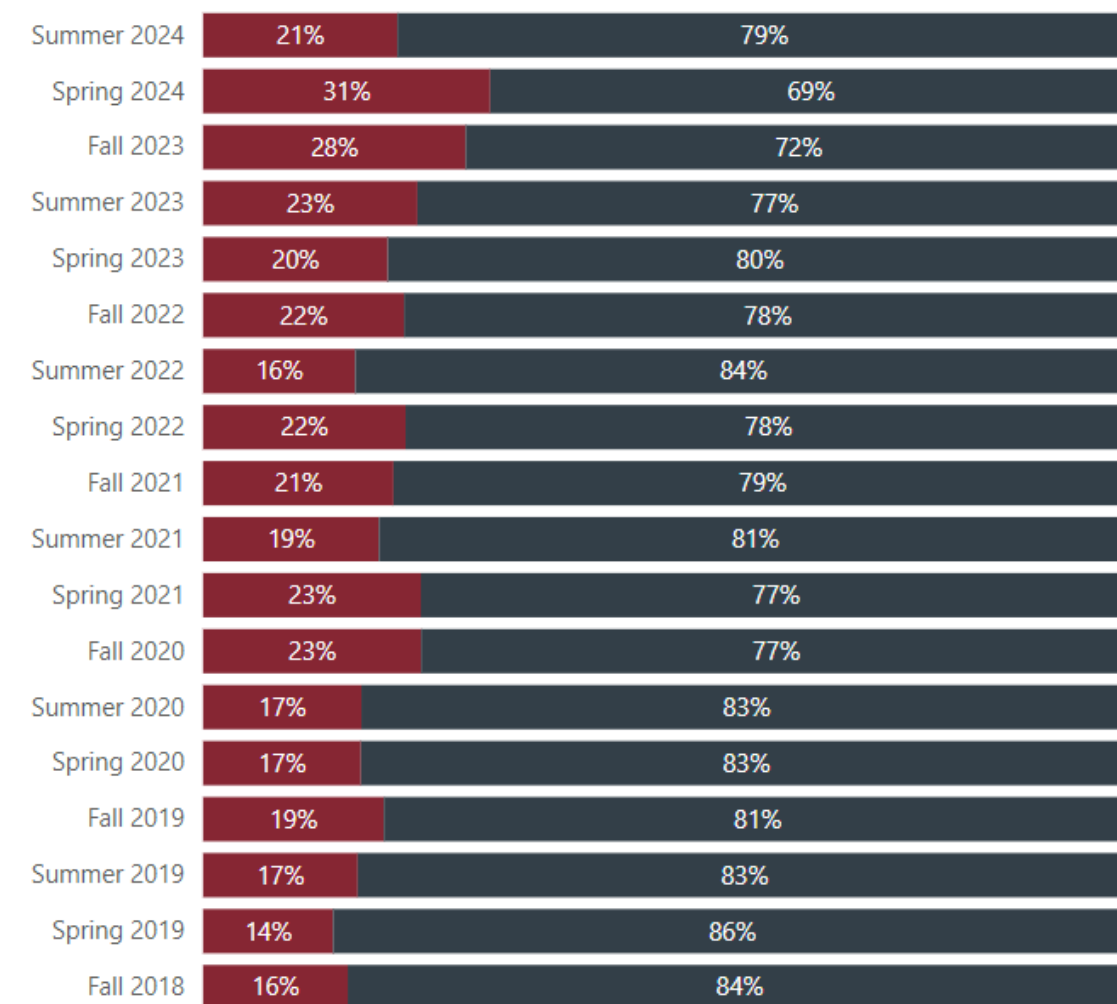
# Course Section Banner Data

ZTC Course Offerings by Faculty



Proportion of ZTC Sections

● ZTC ● Non ZTC



# Tracking Credentials

Connecting ZTC Courses to  
ZTC Degrees



Photo by [Free Nomad](#) on Unsplash

# ZTC Degree Data Mapping

Credential 1		ZTC Section Offered	No ZTC Sections Offered
	Course 1		
	Course 2		
	Course 3		
	Course X		

Credential 2		ZTC Section Offered	No ZTC Sections Offered
	Course 1		
	Course 2		
	Course 3		
	Course X		



# Creating the Dashboard

How did we make this?



# Information Gathering

## Faculties and Programs A-Z

Program Title	Area Of Study	Faculty
Adult Graduation Diploma		
<a href="#">BC Adult Graduation Diploma (Adult Dogwood)</a>	<a href="#">Adult Upgrading</a>	<a href="#">Faculty of Arts &amp; Sciences</a>
Associate Degree		
<a href="#">Associate of Arts Degree in Anthropology</a>	<a href="#">Anthropology</a>	<a href="#">Faculty of Arts</a>
<a href="#">Associate of Arts Degree in Asian Studies</a>	<a href="#">Asian Studies</a>	<a href="#">Faculty of Arts</a>
<a href="#">Associate of Arts Degree in Creative Writing</a>	<a href="#">Creative Writing</a>	<a href="#">Faculty of Arts</a>
<a href="#">Associate of Arts Degree in Criminology</a>	<a href="#">Criminology</a>	<a href="#">Faculty of Arts</a>
<a href="#">Associate of Arts Degree in Economics</a>	<a href="#">Economics</a>	<a href="#">Melville Business School</a>
<a href="#">Associate of Arts Degree in English</a>	<a href="#">English</a>	<a href="#">Faculty of Arts</a>
<a href="#">Associate of Arts Degree in General Studies</a>	<a href="#">General Studies</a>	<a href="#">Faculty of Arts</a>
<a href="#">Associate of Arts Degree in Geography</a>	<a href="#">Geography</a>	<a href="#">Faculty of Arts</a>
<a href="#">Associate of Arts Degree in History</a>	<a href="#">History</a>	<a href="#">Faculty of Arts</a>
<a href="#">Associate of Arts Degree in Music</a>	<a href="#">Music</a>	<a href="#">Faculty of Arts</a>
<a href="#">Associate of Arts Degree in Philosophy</a>	<a href="#">Philosophy</a>	<a href="#">Faculty of Arts</a>
<a href="#">Associate of Arts Degree in Political Science</a>	<a href="#">Political Science</a>	<a href="#">Faculty of Arts</a>
<a href="#">Associate of Arts Degree in Psychology</a>	<a href="#">Psychology</a>	<a href="#">Faculty of Arts</a>
<a href="#">Associate of Arts Degree in Sociology</a>	<a href="#">Sociology</a>	<a href="#">Faculty of Arts</a>

## Associate of Arts Degree in English

Overview

Requirements

### Admission Requirements

The Faculty's Admission Requirements, which consist of KPU's [undergraduate English Proficiency Requirement](#), apply to this program.

### Curricular Requirements

Within the [framework of the Associate of Arts degree](#), students must complete at least 60 credits with a minimum grade of C in each course including the following:

<a href="#">ENGL 1100</a>	Introduction to University Writing	3
Select at least one of the following:		3
<a href="#">ENGL 1202</a>	Reading and Writing About Selected Topics: An Introduction to Literature	
<a href="#">ENGL 1204</a>	Reading and Writing About Genre: An Introduction to Literature	
Select one of the following:		3
<a href="#">ENGL 2301</a>	Canadian Literature in English	
<a href="#">ENGL 2309</a>	Literature of the United States of America	
<a href="#">ENGL 2316</a>	English Literature: 14th to 18th Centuries	
<a href="#">ENGL 2317</a>	English Literature: 18th to 20th Centuries	
Select 6 additional credits from courses in ENGL at the 2000 level		6
Total Credits		15

## FACULTY OF ARTS

### Anthropology

#### Bachelor of Arts, Major in Anthropology

<https://calendar.kpu.ca/>

COD	COURSE NAME	ZTC
ANTH 1100	Social & Cultural Anthropology	No
ANTH 1200	Biological Anthropology	No
ANTH 1300	Archaeology	No
ANTH 1217	Forensic Anthropology 1	No
ANTH 2100	Ethnographic Research Methods and Ethics	No
ANTH 2217	Forensic Methods & Analysis	No
ANTH 2300	Archaeological Methods	No
ANTH 3301	Archaeological Methods for Cultural Resource Management	No
ANTH 3100	Anthropological Theory	No
ANTH 3300	Archaeological Theory	No

# Data Cleanup and Design



Photo by [Deva Darshan](#) on Pexels



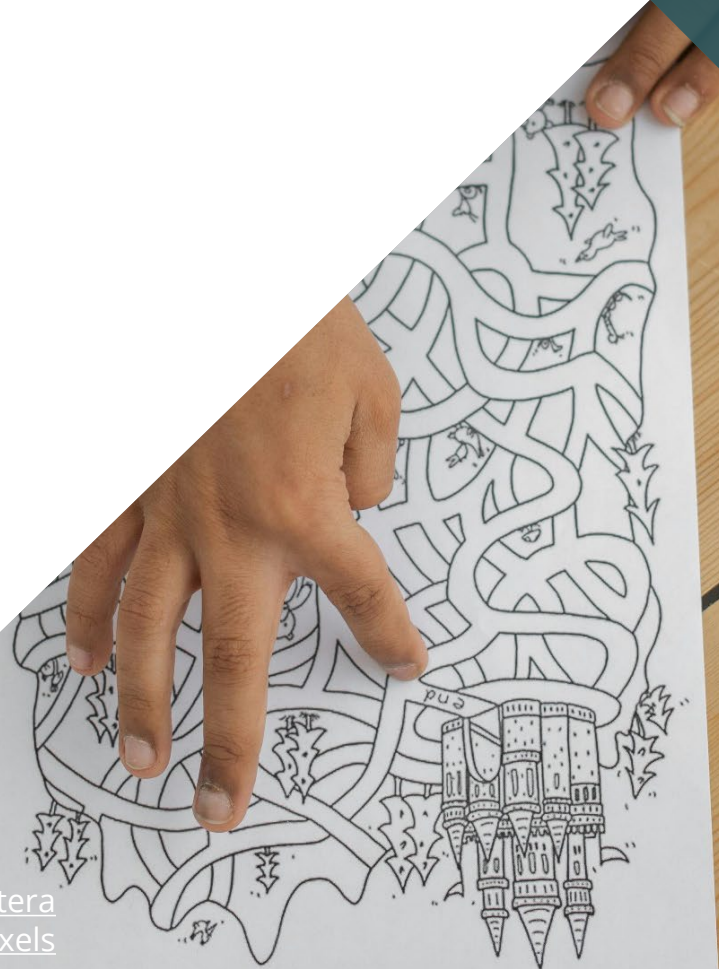
Oluwatobi Ojo, BSc.



# Dashboard Demo

We made a thing!

Photo by [Monstera](#)  
Production on [Pexels](#)



# Next Steps

Reporting Out

Strategic Approaches





# Thank you!



**Amanda Grey**

Open Education Strategist

*amanda.grey@kpu.ca*



**Dr. Nishan Perera**

Director, Learning  
Technologies & Educational  
Development

*nishan.perera@kpu.ca*



**Oluwatobi Ojo**

Open Education  
Student Assistant